

HUNTERS®

HERE TO GET *you* THERE

Oak Park Terrace, Cookridge, LS16

Guide Price £250,000

Property Images



Property Images

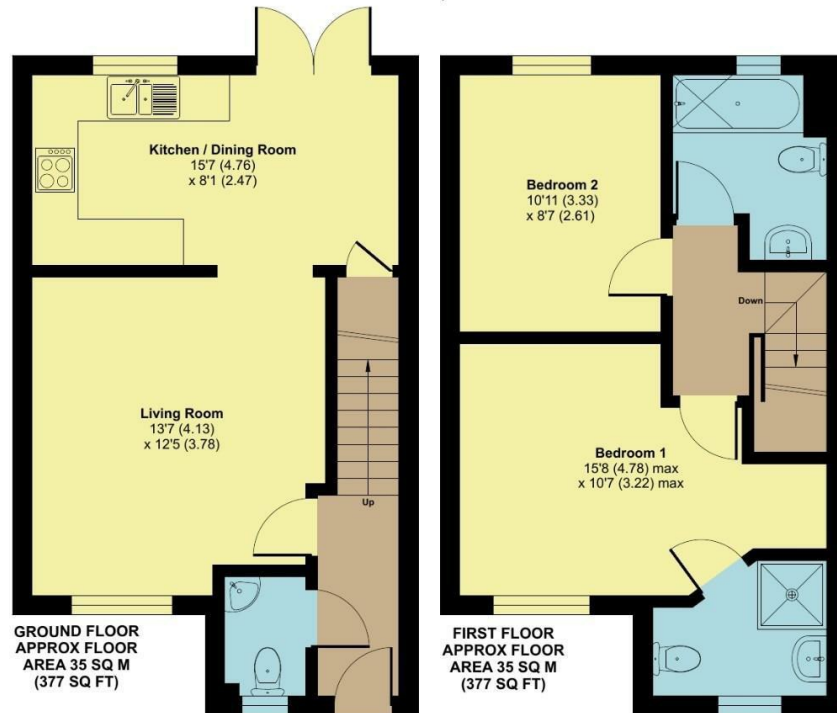


Floorplan

Oak Park Terrace, Leeds, LS16



Approximate Area = 754 sq ft / 70 sq m

For identification only - Not to scale

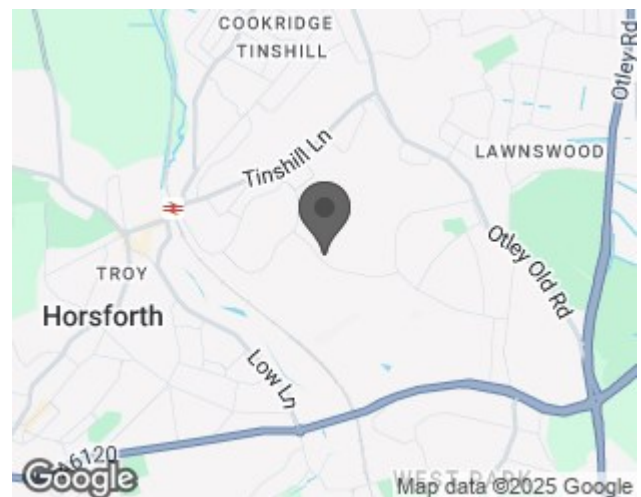


Floor plan produced in accordance with RICS Property Measurement Standards incorporating International Property Measurement Standards (IPMS2 Residential). © nichecom 2025. Produced for Hunters Property Group. REF: 1299297

EPC

Energy Efficiency Rating		Current	Potential
Very energy efficient - lower running costs			
(92 plus) A			
(81-91) B			
(69-80) C			
(55-68) D			
(39-54) E			
(21-38) F			
(1-20) G			
Not energy efficient - higher running costs			
England & Wales		EU Directive 2002/91/EC	

Map



Details

Type: House - Mid Terrace Beds: 2 Bathrooms: 2 Receptions: 2 Tenure: Freehold

Summary

Hunters are proud to present this contemporary mid terrace home, ideally located in a popular residential area of LS16. Positioned conveniently close to Horsforth, Cookridge, and West Park, the property benefits from a wealth of local amenities including shops, restaurants, schools, and excellent transport links by both bus and train. Perfectly suited for first-time buyers, young couples, or those looking to downsize, this home offers, ready to move into accommodation and a well maintained garden space — ideal for both everyday living and entertaining.

Key Features:

- Modern mid terrace home in sought-after LS16 location
- Close to Horsforth, Cookridge, and West Park
- Excellent transport links and local amenities nearby
- Entrance hallway and downstairs W.C.
- Spacious lounge flowing into dining area and modern kitchen
- French doors leading to rear garden — ideal for entertaining
- Two generously sized double bedrooms
- Master bedroom with en-suite shower room
- Stylish house bathroom in neutral décor
- Low-maintenance rear garden with lawn and patio and gated access
- Two allocated parking spaces
- Ideal for first-time buyers, downsizers, or young couples

This is a great home in a popular location, just ready for you to make it your own — so book a viewing today!

Features

• TWO BEDROOM - MID TERRACE • EN-SUITE BATHROOM & DOWNSTAIRS WC • PERFECT OPPORTUNITY TO MAKE IT YOUR OWN • OPEN PLAN LIVING • TWO PARKING BAYS • POPULAR LOCATION • CLOSE TO GOOD TRANSPORT LINKS • EPC RATING:- C • COUNCIL TAX BAND:- C